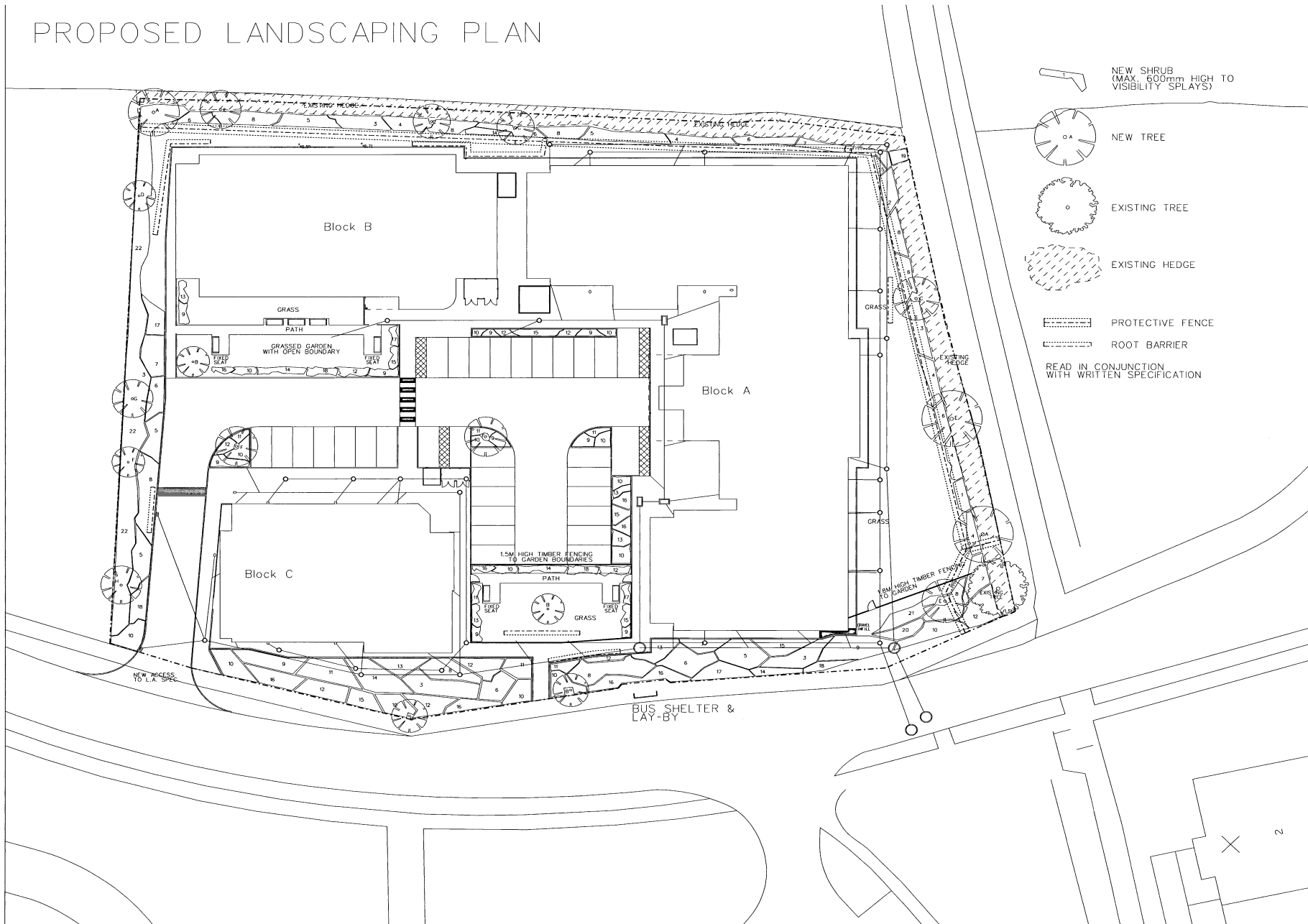


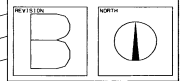
Comparison drawing - Previously approved landscape plan (ref 12/0807/FUL)

PROPOSED LANDSCAPING PLAN



- NEW SHRUB  
(MAX. 600mm HIGH TO VISIBILITY SPLAYS)
  - NEW TREE
  - EXISTING TREE
  - EXISTING HEDGE
  - PROTECTIVE FENCE
  - ROOT BARRIER
- READ IN CONJUNCTION WITH WRITTEN SPECIFICATION

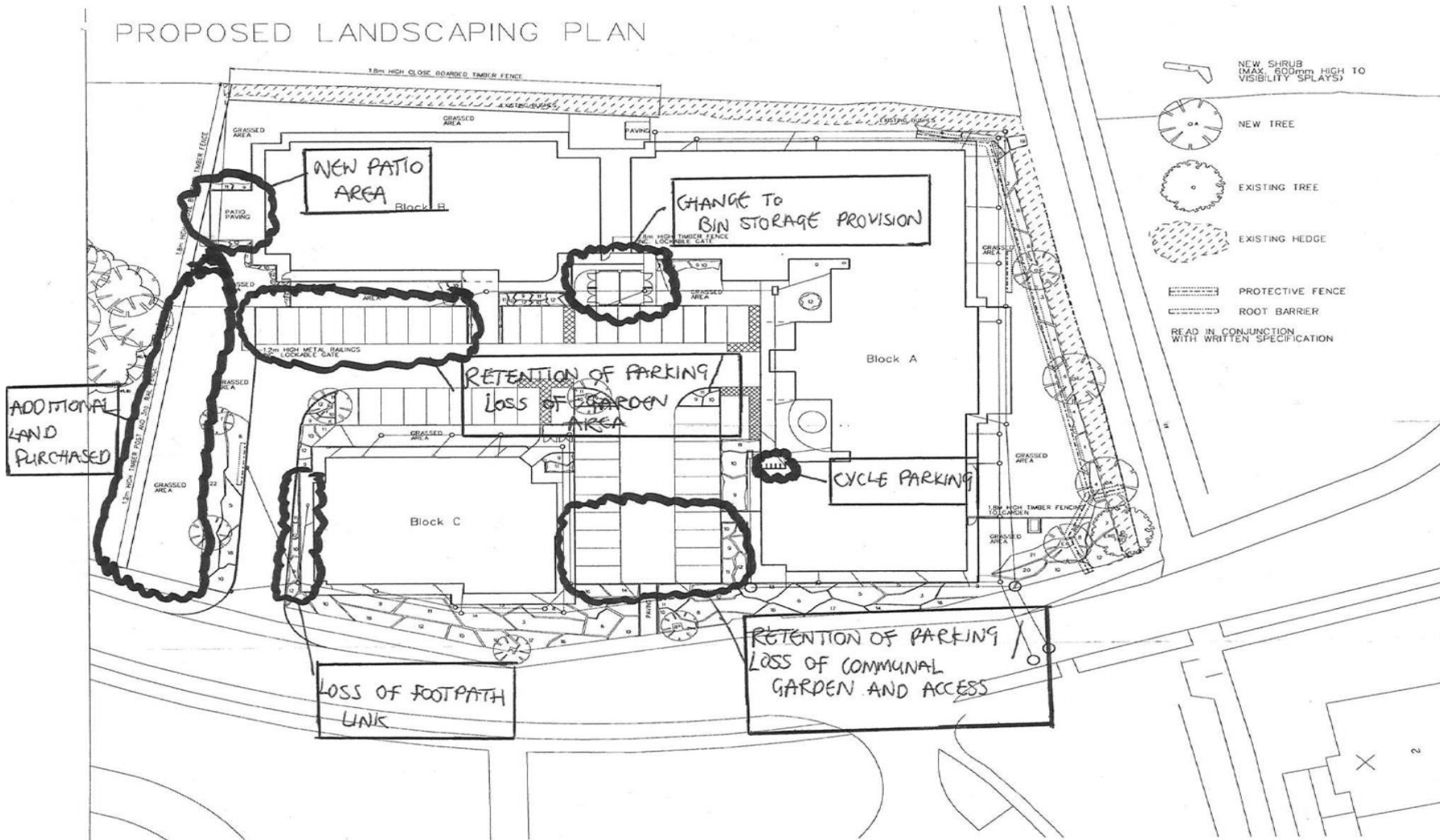
REVISION DATE / DESCRIPTION  
 REVISION 1 - 07/03/09  
 2009 LANDSCAPE PLAN TO ACCOMPANY SPECIFICATION FOR THE PROPOSED CARE HOME AND ACCOMMODATION LAND B NORTH OF BLAIR AVENUE, BILLY GARWICK, STOCKTON-ON-TEES.  
 REVISION 2 - 24/01/10  
 2010 PROPOSED LANDSCAPING AND TREE PROTECTION PLAN









REVISION		NORTH	
STAGE - PLANNING			
PROJECT - CARE HOME & SHELTER ACCOMMODATION LAND B NORTH OF BLAIR AVENUE, BILLY GARWICK, STOCKTON-ON-TEES.			
DRAWING - PROPOSED LANDSCAPING AND TREE PROTECTION PLAN			
PROJECT NO. 2611	DRAWING NO. A-12	REVISION B	
DATE DEC '09	SCALE 1:200 @ A1	DRAWN BY DJB	
MORIS MINCHELLA ARCHITECTS LTD.			
2 WALLDEN HOUSE, 125, WINDSOR ROAD, BRIMPTON, ON THE A630 NEAR NEWBY LEIC. T: 0151 4151331 W: WWW.M-M-A.NET E: INFO@M-M-A.NET			
THIS DRAWING IS COPYRIGHT © MORIS MINCHELLA ARCHITECTS		ALL RIGHTS RESERVED NO REPRODUCTION WITHOUT PERMISSION	

Comparison drawing – Areas of change (shown on proposed landscaping plan)

# PROPOSED LANDSCAPING PLAN



-  NEW SHRUB (MAX. 600mm HIGH TO VISIBILITY SPLAYS)
-  NEW TREE
-  EXISTING TREE
-  EXISTING HEDGE
-  PROTECTIVE FENCE
-  ROOT BARRIER
- READ IN CONJUNCTION WITH WRITTEN SPECIFICATION

PROPOSED LANDSCAPING AND TREE PROTECTION PLAN

13/0534/

PLANNING

PROPOSED LANDSCAPING AND TREE PROTECTION PLAN

PROJECT NO.	2611	DATE	DEC '09
VERSION	A-12	SCALE	1:200(A1)
REVISION	E	DRAWN BY	DJG

MARCO MINICHELLA ARCHITECTS LTD

11/11/09

M M  
A LTD